

MORGAN AND MORECAMBE OFFSHORE WIND FARMS: TRANSMISSION ASSETS

The Applicants' submission at Deadline 3 on 7 July 2025

Annex 3.1 to the Applicants Response to ExA Questions: Q1.1.1 – River Ribble Crossing



Deadline:
Application Reference: EN020028

Document Numbers:
MRCNS-J3303-JVW-19111
MOR001-FLO-CON-CAG-DWG-0001

Document Reference:
S_D3_3.1
7 July 2025
F01

Document status					
Version	Purpose of document	Approved by	Date	Approved by	Date
F01	Deadline 3 Submission	HK	July 2025	IM	July 2025

Prepared by:	Prepared for:
Morgan Offshore Wind Limited, Morecambe Offshore Windfarm Ltd	Morgan Offshore Wind Limited, Morecambe Offshore Windfarm Ltd

Contents

1	THE APPLICANTS' SUBMISSION AT DEADLINE 3 ON 7 JULY 2025	1
1.1	Introduction.....	1
2	RIVER RIBBLE CROSSING – DIRECT PIPE	2
3	RIVER RIBBLE CROSSING – MICRO TUNNEL	3

Tables

No table of figures entries found.

Figure 1 – River Ribble Crossing – Direct Pipe	2
Figure 2 - River Ribble Crossing – Micro Tunnel	3

Glossary

Term	Meaning
400 kV grid connection cables	Cables that will connect the proposed onshore substations to the existing National Grid Penwortham substation.
400 kV grid connection cable corridor	The corridor within which the 400 kV grid connection cables will be located.
Applicants	Morgan Offshore Wind Limited (Morgan OWL) and Morecambe Offshore Windfarm Ltd (Morecambe OWL).
Biodiversity benefit	<p>An approach to development that leaves biodiversity in a better state than before. Where a development has an impact on biodiversity, developers are encouraged to provide an increase in appropriate natural habitat and ecological features over and above that being affected.</p> <p>For the Transmission Assets, biodiversity benefit will be delivered within identified biodiversity benefit areas within the Onshore Order Limits. Further qualitative benefits to biodiversity are proposed via potential collaboration with stakeholders and local groups, contributing to existing plans and programmes, both within and outside the Order Limits.</p>
Code of Construction Practice	A document detailing the overarching principles of construction, contractor protocols, construction-related environmental management measures, pollution prevention measures, the selection of appropriate construction techniques and monitoring processes.
Commitment	This term is used interchangeably with mitigation and enhancement measures. The purpose of commitments is to avoid, prevent, reduce or, if possible, offset significant adverse environmental effects. Primary and tertiary commitments are taken into account and embedded within the assessment set out in the ES.
Construction Traffic Management Plan	A document detailing the construction traffic routes for heavy goods vehicles and personnel travel, protocols for delivery of Abnormal Indivisible Loads to site, measures for road cleaning and sustainable site travel measures.
Design envelope	A description of the range of possible elements and parameters that make up the Transmission Assets options under consideration, as set out in detail in Volume 1, Chapter 3: Project Description. This envelope is used to define the Transmission Assets for EIA purposes when the exact engineering parameters are not yet known. This is also referred to as the Maximum Design Scenario or Rochdale Envelope approach.
Development Consent Order	An order made under the Planning Act 2008, as amended, granting development consent.
Direct pipe	A cable installation technique which involves the use of a mini (or micro) tunnel boring machine and a hydraulic (or other) thruster rig to directly install a steel pipe between two points.
Environmental Impact Assessment	The process of identifying and assessing the significant effects likely to arise from a project. This requires consideration of the likely changes

Term	Meaning
	to the environment, where these arise as a consequence of a project, through comparison with the existing and projected future baseline conditions.
Environmental Statement	The document presenting the results of the Environmental Impact Assessment process.
Evidence Plan Process	A voluntary consultation process with specialist stakeholders to agree the approach to, and information to support, the EIA and Habitats Regulations Assessment processes for certain topics.
Generation Assets	The generation assets associated with the Morgan Offshore Wind Project and the Morecambe Offshore Windfarm include the offshore wind turbines, inter-array cables, offshore substation platforms and platform link (interconnector) cables to connect offshore substations.
Intertidal area	The area between Mean High Water Springs and Mean Low Water Springs.
Intertidal Infrastructure Area	The temporary and permanent areas between MLWS and MHWS.
Landfall	The area in which the offshore export cables make landfall (come on shore) and the transitional area between the offshore cabling and the onshore cabling. This term applies to the entire landfall area at Lytham St. Annes between Mean Low Water Springs and the transition joint bay inclusive of all construction works, including the offshore and onshore cable routes, intertidal working area and landfall compound(s).
Local Authority	A body empowered by law to exercise various statutory functions for a particular area of the United Kingdom. This includes County Councils, District Councils and County Borough Councils.
Local Highway Authority	A body responsible for the public highways in a particular area of England and Wales, as defined in the Highways Act 1980.
Main rivers	The term used to describe a watercourse designated as a Main River under the Water Resources Act 1991 and shown on the Main River Map. These are usually larger rivers or streams and are managed by the Environment Agency.
Marine licence	The Marine and Coastal Access Act 2009 requires a marine licence to be obtained for licensable marine activities. Section 149A of the Planning Act 2008 allows an applicant for to apply for 'deemed marine licences' in English waters as part of the development consent process
Maximum design scenario	The realistic worst case scenario, selected on a topic-specific and impact specific basis, from a range of potential parameters for the Transmission Assets.
Mean High Water Springs	The height of mean high water during spring tides in a year.
Mean Low Water Springs	The height of mean low water during spring tides in a year.
Micro-tunnel / micro-tunnelling	A tunnelling technique involving the use of a hydraulic (or other) jacking rig and a mini (or micro) tunnel boring machine to install a concrete tunnel between two points.
Mitigation measures	This term is used interchangeably with Commitments. The purpose of such measures is to avoid, prevent, reduce or, if possible, offset significant adverse environmental effects.
Morecambe Offshore Windfarm: Generation Assets	The offshore generation assets and associated activities for the Morecambe Offshore Windfarm.

Term	Meaning
Morecambe Offshore Windfarm: Transmission Assets	The offshore export cables, landfall, and onshore infrastructure required to connect the Morecambe Offshore Windfarm to the National Grid.
Morecambe OWL	Morecambe Offshore Windfarm Ltd is a joint venture between Zero-E Offshore Wind S.L.U. (Spain) (a Cobra group company) (Cobra) and Flotation Energy Ltd.
Morgan and Morecambe Offshore Wind Farms: Transmission Assets	<p>The offshore export cables, landfall, and onshore infrastructure for the Morgan Offshore Wind Project and the Morecambe Offshore Windfarm. This includes the offshore export cables, landfall site, onshore export cables, onshore substations, 400 kV grid connection cables and associated grid connection infrastructure such as circuit breaker compounds.</p> <p>Also referred to in this report as the Transmission Assets, for ease of reading.</p>
Morgan Offshore Wind Project: Generation Assets	The offshore generation assets and associated activities for the Morgan Offshore Wind Project.
Morgan Offshore Wind Project: Transmission Assets	The offshore export cables, landfall and onshore infrastructure required to connect the Morgan Offshore Wind Project to the National Grid.
Morgan OWL	Morgan Offshore Wind Limited is a joint venture between bp Alternative Energy Investments Ltd. and Energie Baden-Württemberg AG (EnBW).
National Grid Penwortham substation	The existing National Grid substation at Penwortham, Lancashire.
National Policy Statement(s)	The current national policy statements published by the Department for Energy and Net Zero in 2023 and adopted in 2024.
Offshore booster station	A fixed structure located along the offshore export cable route, containing electrical equipment to ensure bulk wind farm capacity can be fully transmitted to the onshore substations.
Offshore substation platform(s)	A fixed structure located within the wind farm sites, containing electrical equipment to aggregate the power from the wind turbine generators and convert it into a more suitable form for export to shore.
Offshore export cables	The cables which would bring electricity from the Generation Assets to the landfall.
Offshore export cable corridor	The corridor within which the offshore export cables will be located.
Offshore Permanent Infrastructure Area	The area within the Transmission Assets Offshore Order Limits (up to MLWS) where the permanent offshore electrical infrastructure (i.e. offshore export cables) will be located.
Offshore Order Limits	See Transmission Assets Order Limits: Offshore (below).
Offshore substation platform(s)	A fixed structure located within the wind farm sites, containing electrical equipment to aggregate the power from the wind turbine generators and convert it into a more suitable form for export to shore.
Onshore export cables	The cables which would bring electricity from the landfall to the onshore substations.
Onshore export cable corridor	The corridor within which the onshore export cables will be located.

Term	Meaning
Onshore Infrastructure Area	The area within the Transmission Assets Order Limits landward of MHWS. Comprising the offshore export cable corridor from MHWS to the transition joint bay, onshore export cable corridor, onshore substations and 400 kV grid connection cable corridor, and associated temporary and permanent infrastructure including temporary and permanent compound areas and accesses. Those parts of the Transmission Assets Order Limits proposed only for ecological mitigation and/or biodiversity benefit are excluded from this area.
Onshore Order Limits	See Transmission Assets Order Limits: Onshore (below).
Onshore substations	The onshore substations will include a substation for the Morgan Offshore Wind Project: Transmission Assets and a substation for the Morecambe Offshore Windfarm: Transmission Assets. These will each comprise a compound containing the electrical components for transforming the power supplied from the generation assets to 400 kV and to adjust the power quality and power factor, as required to meet the UK Grid Code for supply to the National Grid.
Preliminary Environmental Information Report	A report that provides preliminary environmental information in accordance with the Infrastructure Planning (Environmental Impact Assessment) Regulations 2017. This is information that enables consultees to understand the likely significant environmental effects of a project, and which helps to inform consultation responses.
Renewable energy	Energy from a source that is not depleted when used, such as wind or solar power.
Scour protection	Protective materials to avoid sediment being eroded away from the base of the foundations due to the flow of water.
Substation	Part of an electrical transmission and distribution system. Substations transform voltage from high to low, or the reverse by means of electrical transformers.
The Secretary of State for Energy Security and Net Zero	The decision maker with regards to the application for development consent for the Transmission Assets.
Transmission Assets	See Morgan and Morecambe Offshore Wind Farms: Transmission Assets (above).
Transmission Assets Order Limits	The area within which all components of the Transmission Assets will be located, including areas required on a temporary basis during construction and/or decommissioning (such as construction compounds).
Transmission Assets Order Limits: Offshore	<p>The area within which all components of the Transmission Assets seaward of Mean Low Water Springs will be located, including areas required on a temporary basis during construction and/or decommissioning.</p> <p>Also referred to in this report as the Offshore Order Limits, for ease of reading.</p>
Transmission Assets Order Limits: Onshore	<p>The area within which all components of the Transmission Assets landward of Mean High Water Springs will be located, including areas required on a temporary basis during construction and/or decommissioning (such as construction compounds).</p> <p>Also referred to in this report as the Onshore Order Limits, for ease of reading.</p>

Acronyms

Acronym	Meaning
AIS	Air Insulated Switchgear
AOD	Above Ordnance Datum
BCA	Bilateral Grid Connection Agreement
CoCP	Code of Construction Practice
CoT	Project Commitment
CBRA	Cable Burial Risk Assessment
CfD	Contracts for Difference
CMS	Construction Method Statement
CSIP	Cable Specification and Installation Plan
CTMP	Construction Traffic Management Plan
DCO	Development Consent Order
DECC	Department of Energy and Climate Change
Defra	Department for Environment, Food and Rural Affairs
DESNZ	Department for Energy Security & Net Zero
dML	Deemed Marine Licence
EnBW	Energie Baden-Württemberg AG
EIA	Environmental Impact Assessment
EMP	Environmental Management Plan
EPP	Evidence Plan Process
ES	Environmental Statement
EWG	Expert Working Group
GIS	Gas Insulated Switchgear
HDD	Horizontal Directional Drilling
HGV	Heavy goods vehicle
HNDR	Holistic Network Design Review
HVAC	High Voltage Alternating Current
IALA	International Association of Marine Aids to Navigation and Lighthouse Authorities
IAQM	Institute of Air Quality Management
LAT	Lowest Astronomical Tide
MCA	Maritime and Coastguard Agency
MCZ	Marine Conservation Zone
MDS	Maximum Design Scenario

Acronym	Meaning
MHWS	Mean High Water Springs
MLWS	Mean Low Water Springs
MMO	Marine Management Organisation
MPS	Marine Policy Statement
MTBM	Mini (or micro) tunnel boring machine
NGESO	National Grid Electricity System Operator
NPS	National Policy Statement
NSIP	Nationally Significant Infrastructure Project
O&M	Operation and Maintenance
OSP	Offshore Substation Platform
OTNR	Offshore Transmission Network Review
PDE	Project Design Envelope
PEIR	Preliminary Environmental Information Report
PPP	Pollution Prevention Plan
PRoW	Public rights of way
SAC	Special Areas of Conservation
SAR	Search and Rescue
SPA	Special Protection Area
SNCBs	Statutory Nature Conservation Bodies
SSSI	Sit of Special Scientific Interest
SWMP	Site Waste Management Plan
TEP	Technical Engagement Plan
TJB	Transition Joint Bay
UK	United Kingdom
UXO	Unexploded Ordnance
WSI	Written scheme of investigation

Units

Unit	Description
%	Percentage
dB	Decibels
Kg	Kilogram
kHz	Kilohertz

Unit	Description
KJ	Kilojoules
km	Kilometres
km ²	Kilometres squared
kV	Kilovolt
m	Metres
m ²	Metres squared
m ³	Metres cubed
nm	Nautical mile
μPa	micropascal

1 The Applicants' submission at Deadline 3 on 7 July 2025

1.1 Introduction

1.1.1.1 This Appendix is provided in response to The Examining Authority's written questions and requests for information (ExQ1): Q1.1.1, which states:

“River Ribble crossing

1.1.1.2 *The written representation from South Ribble Borough Council [REP1-097] raises concerns at the lack of plans to clearly show how works to cross the River Ribble will be conducted. For each of the two potential trenchless installation techniques (micro-tunnelling and direct pipe) described in the Project Description [REP2-008] provide indicative drawings showing (a) the layout of relevant construction works (including compounds) and (b) a full cross-section showing the full extent of the proposed works taking account of existing topography and landform.”*

1.1.1.3 The Applicants have provided two drawings presenting the layout of relevant construction works, including cross-sections reflecting existing topography, for both proposed methods:

- Direct Pipe (Figure 1) and
- Micro tunnelling (Figure 2).

1.1.1.4 Further information on these two methods is provided in Section 3.15.8 within Volume 1, Chapter 3: Project Description.

2 River Ribble Crossing – Direct Pipe

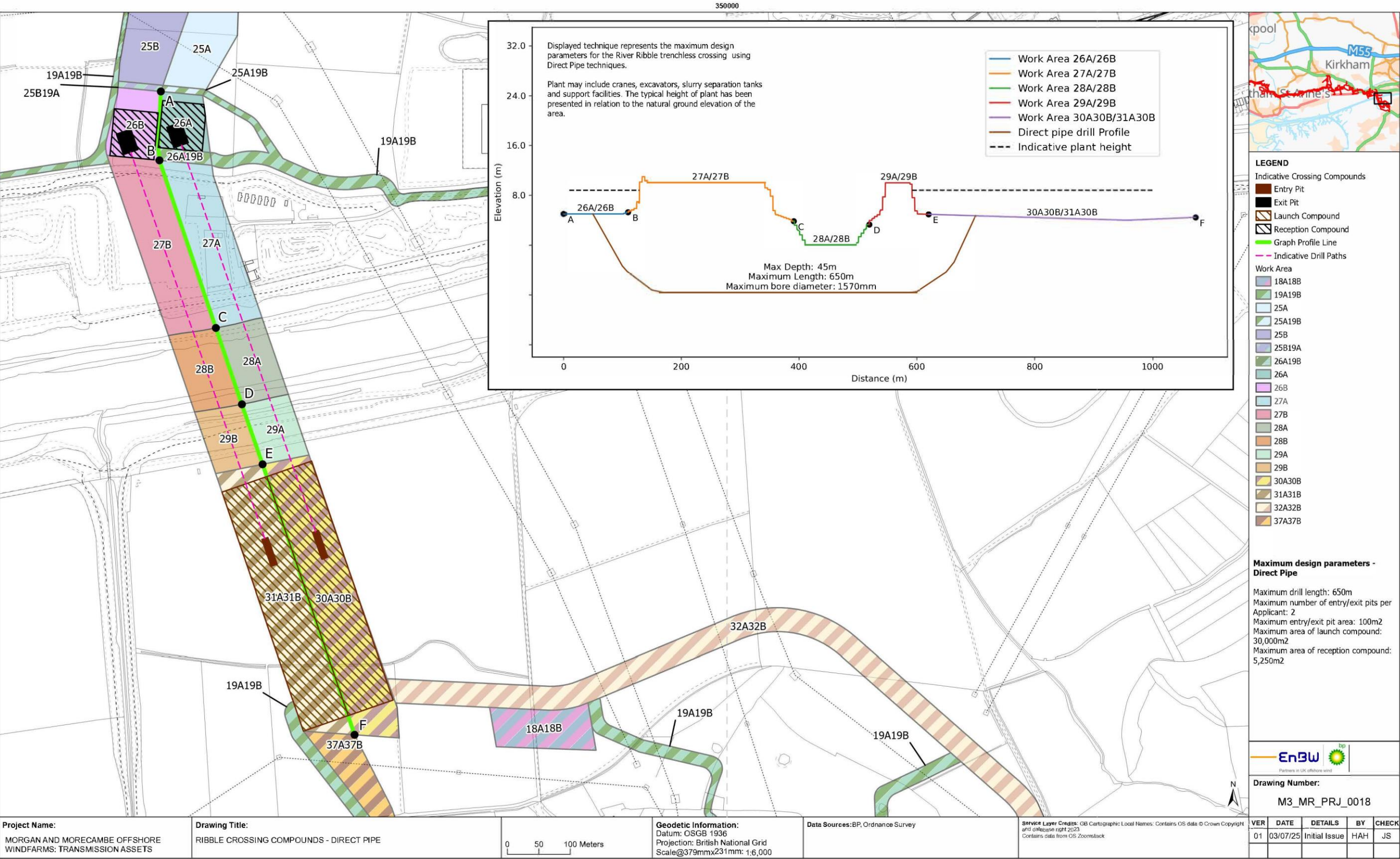


Figure 1 – River Ribble Crossing – Direct Pipe

